

# MOD / NATO Disposals

ilitary vehicles and equipment for sale

[www.modsurplus.co.uk](http://www.modsurplus.co.uk)

Tel: +44 (0)1302-954007

[Return to Homepage](#) | E-Mail: [sales@modsurplus.co.uk](mailto:sales@modsurplus.co.uk)



REQUEST A QUOTE

or call us on UK +44(0)1302-954007

## Description / Ref

MAN SX45 8x8 recovery truck - 40135

Photo (a gallery of photos is provided below - where available)



## Details

Man SX45 32.430 8x8 RHD recovery trucks. These are the latest release from the British army and built to a high specification. The trucks is in excellent condition with only 20,000 kilometres.

### Specification:

- MAN D20-440 BHP turbo charged air cooled EURO 4 engine
- ZF Ecomat HL 6HP 902 full automatic gearbox c/w transfer box with internal axle locks
- Man driven axles c/w cross locks and differential locks
- Steel coil spring suspension to 1st and 2nd axle
- Hydraulic rear axle suspension, c/w independent raise/lower controls
- EKA heavy recovery body c/w Terex Atlas 600.2 hydraulic rotating crane c/w top seat mounted controls and hand held digital LCD remote controls
- Power out hydraulic stabiliser legs
- Rotzler TR200 20 ton hydraulic main winch c/w remote control
- Rotzler TR080 8 ton hydraulic self recovery winch

- Rotzler H2010 1 ton auxiliary hydraulic winch
- Heavy duty 2 piece tow bar
- Hydraulic cutting equipment
- Auxiliary DC charging points
- Rear service/emergency air connections
- Rotating amber beacons
- Various lockable storage lockers
- Isringhausen air suspended driver and passenger seat
- Roof mounted independent heavy duty air conditioning unit
- Roof exit hatch
- Cruise control
- GVW: 32,000 Kg's
- Max train weight: 62,000 kg's

Videos (if available)



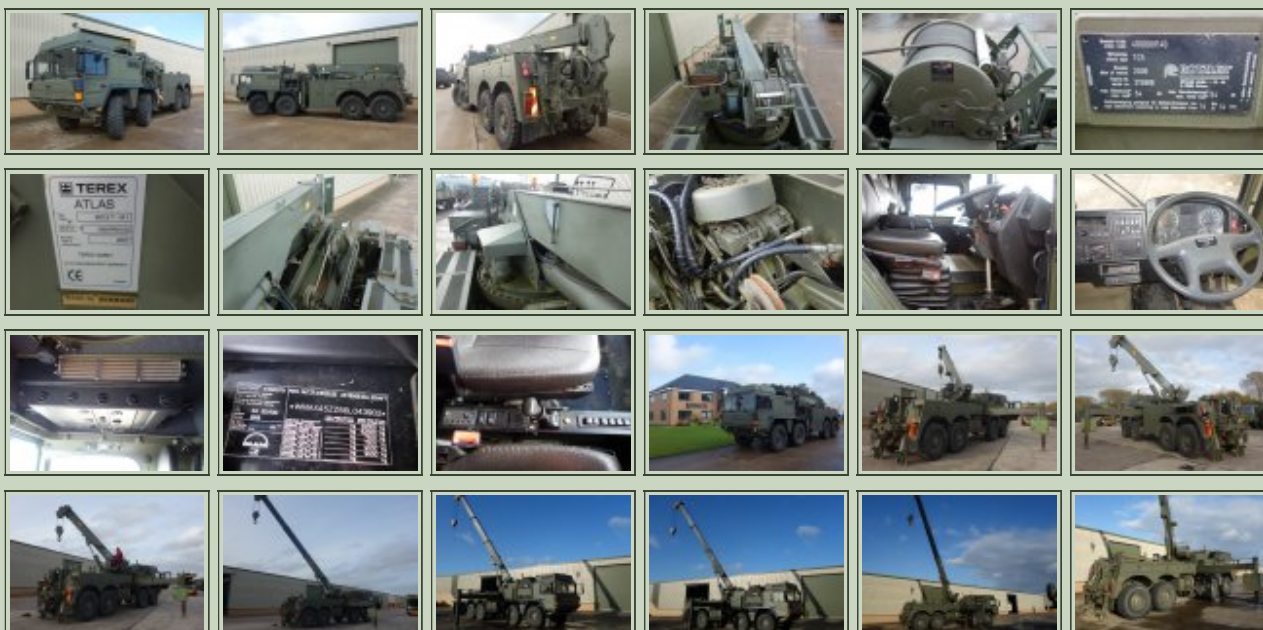
Category	Recovery Trucks	Length	10.60m
Manufacturer	MAN	Height	3.10m
Engine	Man 440HP EURO 4	Width	2.55m
Gearbox	ZF automatic	GVW	32,000 kg's
Brakes		Hrs_Kms	20,000 km's
Steering	RHD	Date into Service	
Tyres	16.00R20	Year of Manufacture	2007
Max Load		Qty Available	1
Electrics	24 v	Export Requirements <a href="#">...more</a>	OGEL/SIEL Licence Required

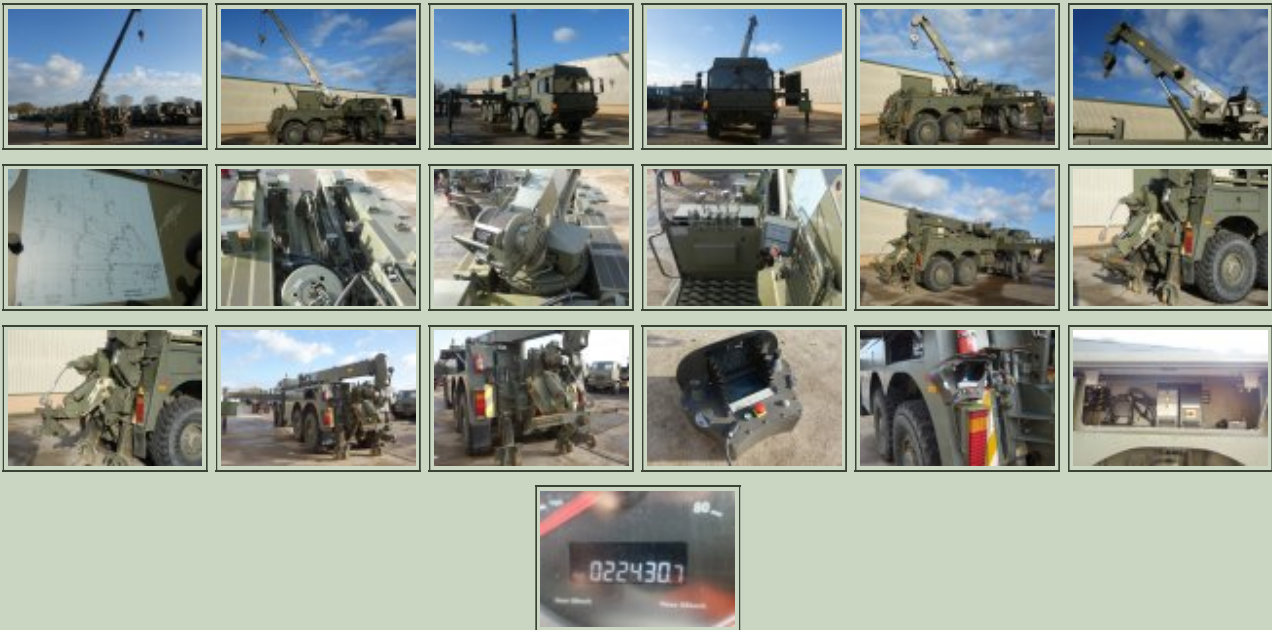


REQUEST A QUOTE

or call us on UK +44(0)1302-954007

### Photo Gallery





■  
All prices quoted are GBP U.K. Pounds Sterling Ex. Works excluding VAT where applicable and shipping / associated costs.

■  
Vehicles advertised are subject to remaining unsold.

■  
All prices quoted are based on **"per individual unit"** purchased, any reductions on advertised price for multiple item orders is subject to negotiation and is conducted at the time of inspection or provision of LOI.

■  
Photo's shown above may represent a vehicle type rather than an actual vehicle, vehicles are available serviced and painted to customers preference

■  
An export licence may be required for items sold to customers outside of the U.K.

**FOR MORE INFORMATION ON EXPORT LICENCING PROCEDURES**

**[CLICK HERE](#)**

**FOR INFORMATION ON CURRENT EU EMBARGOES**

**[CLICK HERE](#)**